



***Sanatorium hélio-marin Jean Martin***

*275 Corniche Kennedy*







Dessiné par L. Lan

Imp. Marseillaise

Planche 9.

LÉGENDE

Château du Pharo . . . . .	2	Pont des Auffes . . . . .	10
Ecole de Médecine et Institut Pasteur . . . . .	2	Eglise d'Endoume . . . . .	15
Fort Saint-Nicolas . . . . .	3	Laboratoire de Zoologie Maritime . . . . .	20
Ateliers d'Aveugles . . . . .	8	Pont de la Fausse-Monnaie . . . . .	21
Caserne d'Aurelles . . . . .	9	Marégraphe . . . . .	24
		Sanatorium Jean-Martin . . . . .	24

Planche 7.





1866

*Léon & Lévy,  
Le vallon de l'Oriol vu  
d'Endorme, Marseille  
(Bouches-du-Rhône),  
ca. 1860–1865,  
photographie.*



***\_Pré-existence & persistance***



© Léon & Lévy

1866



© Google Earth

2025



1866



2025



1866



2025

image de gauche



image de droite



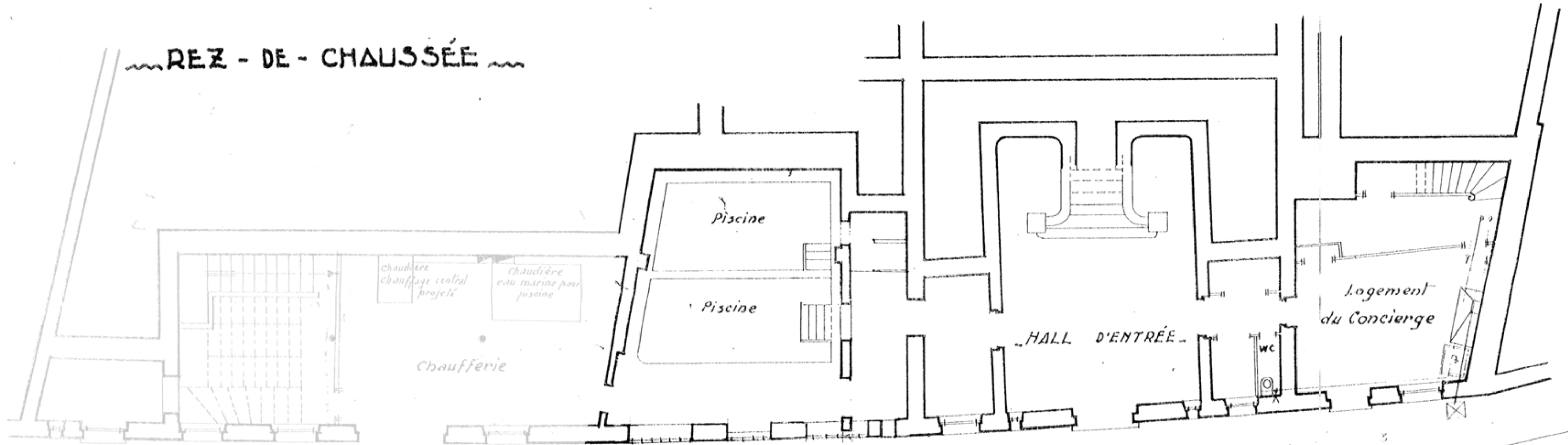


1866

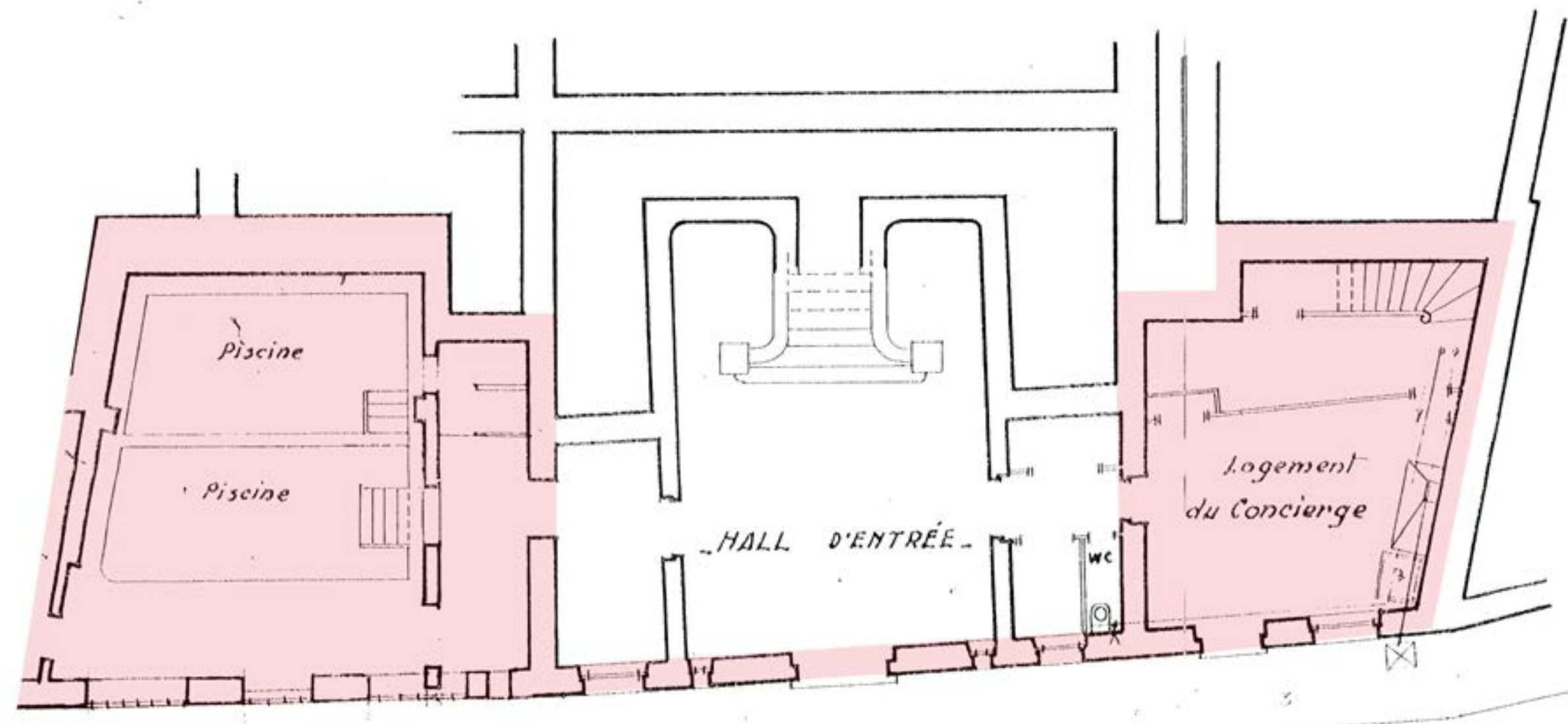


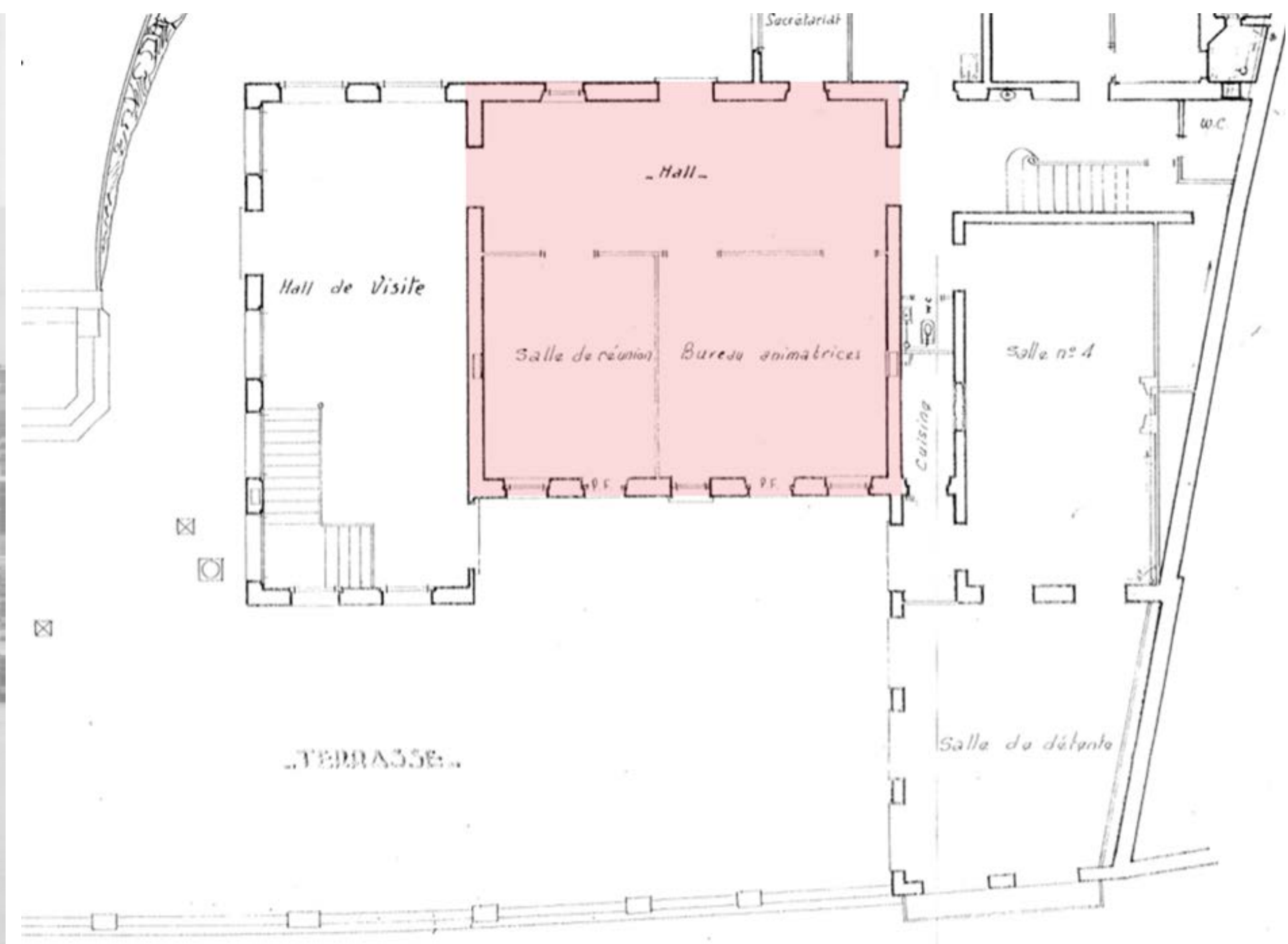
2025

REZ - DE - CHAUSSEE



Promenade de la Corniche



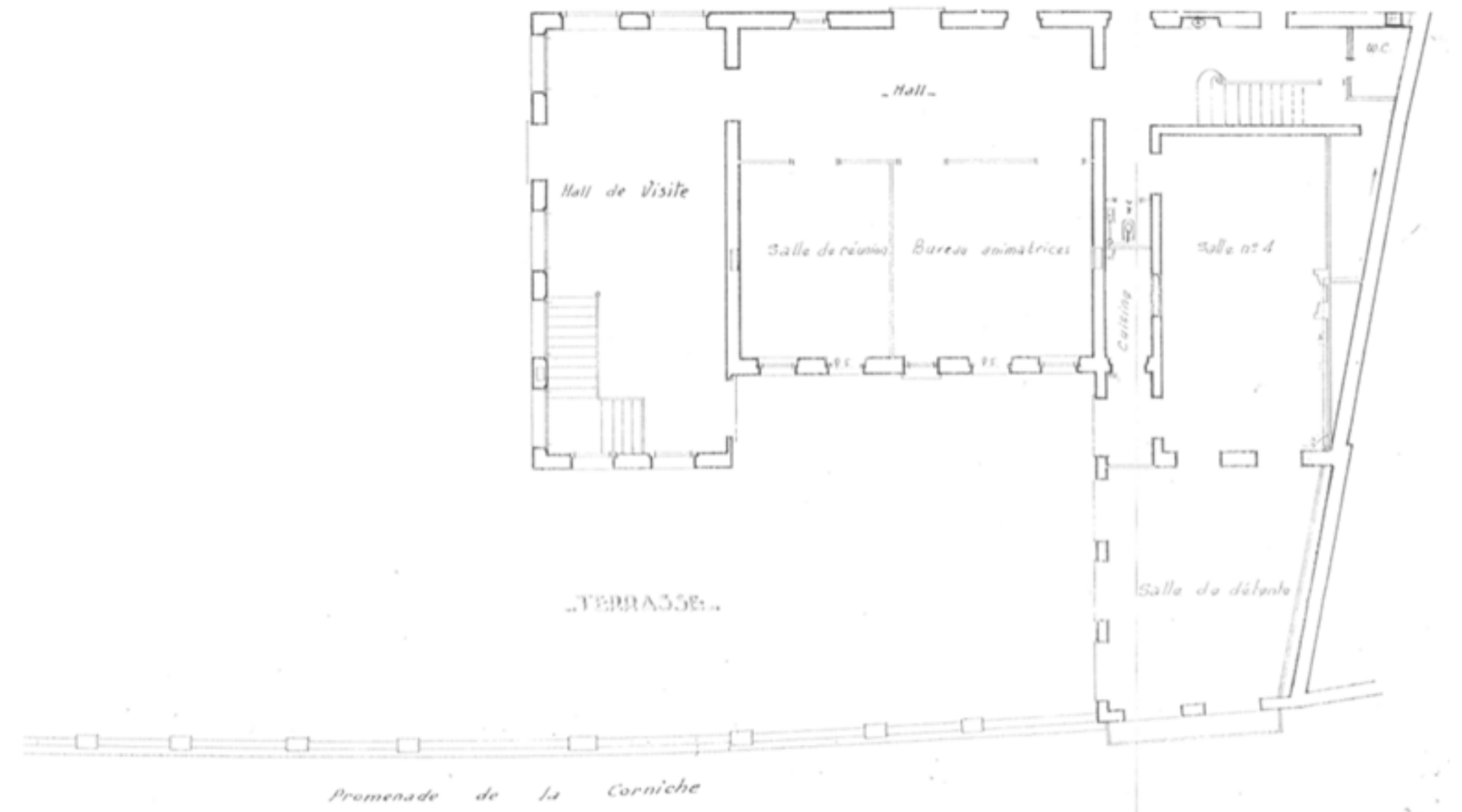
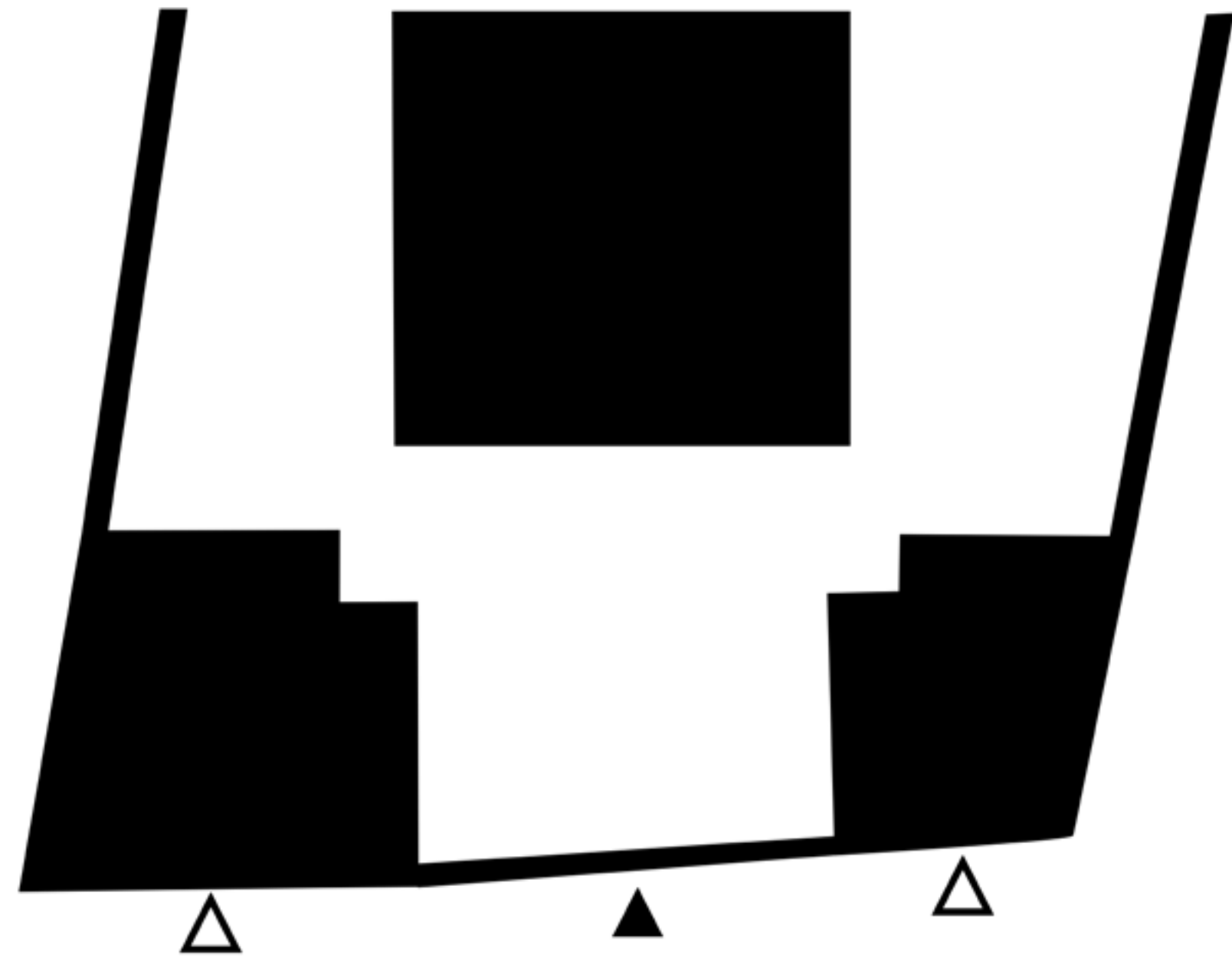




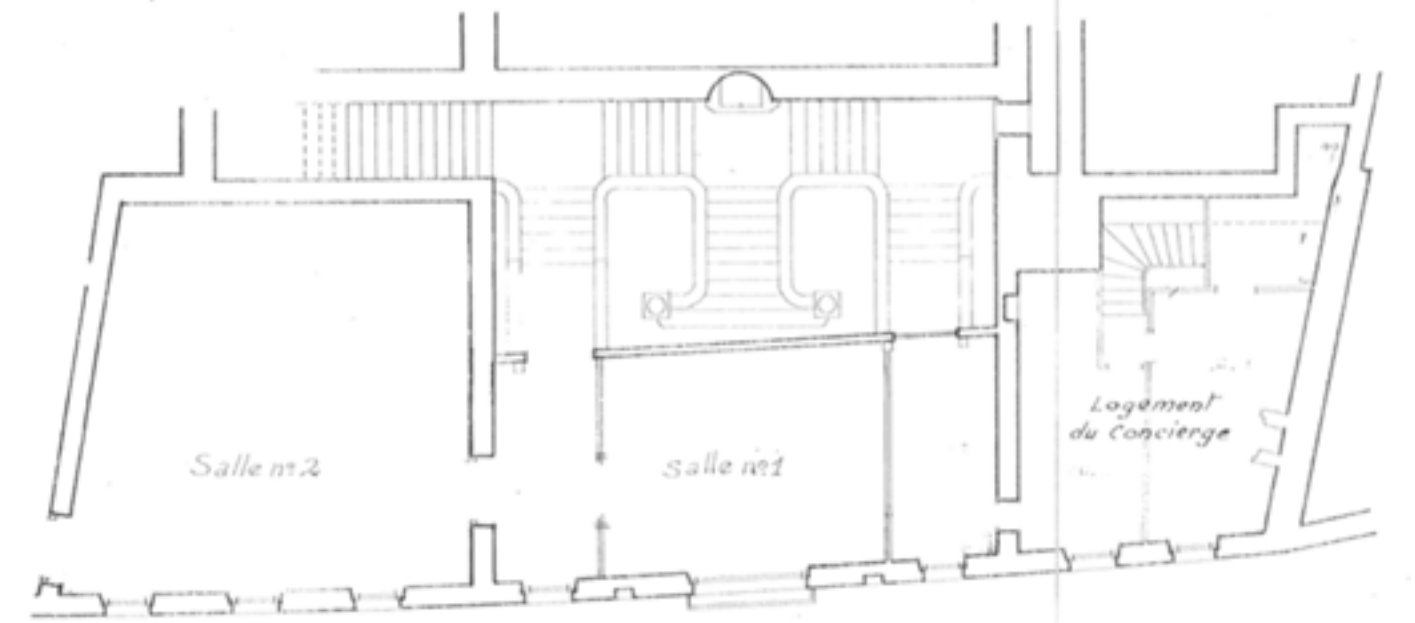
1866



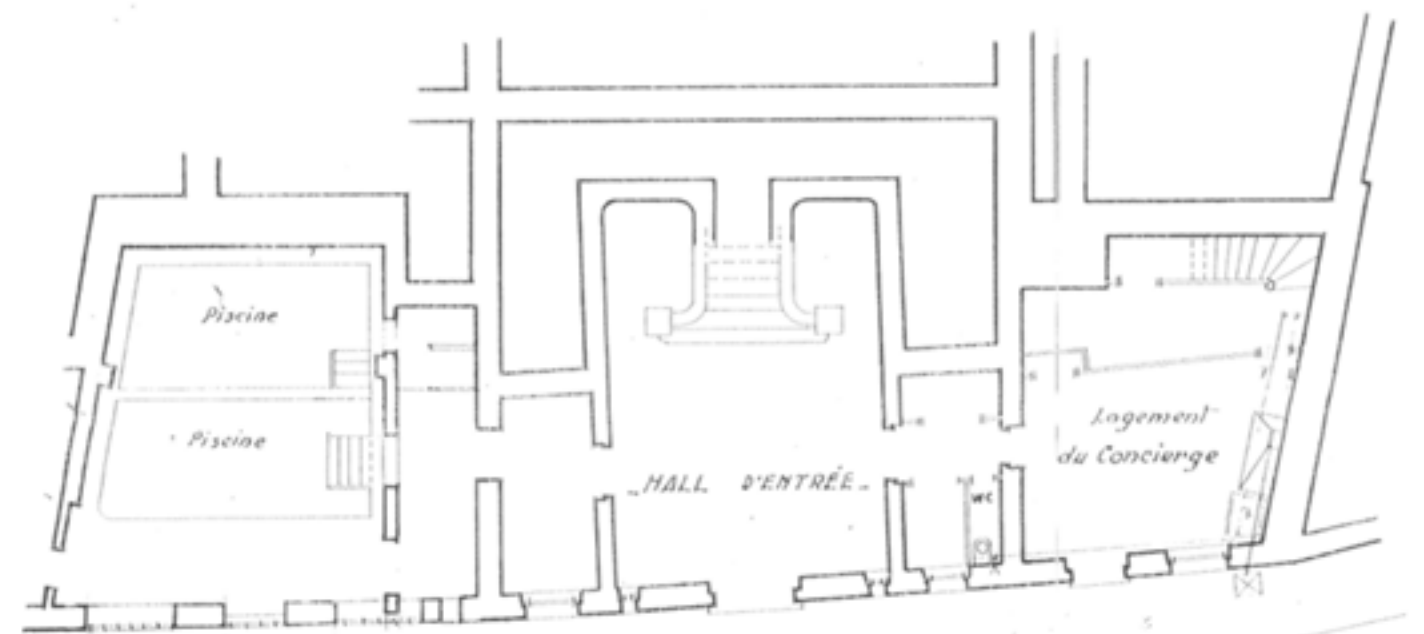
2025



ENTRESOL



REZ - DE - CHAUSSEE

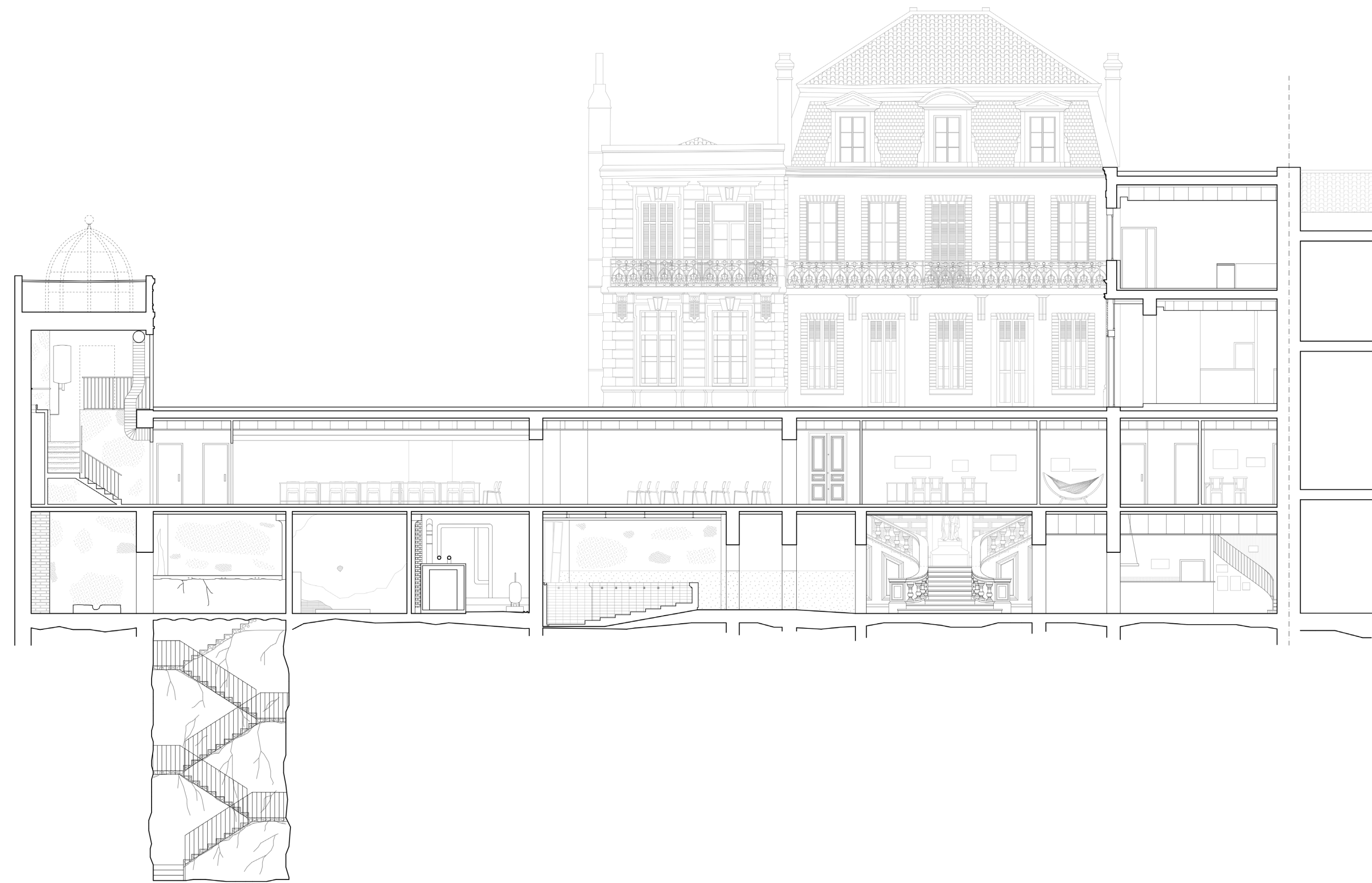


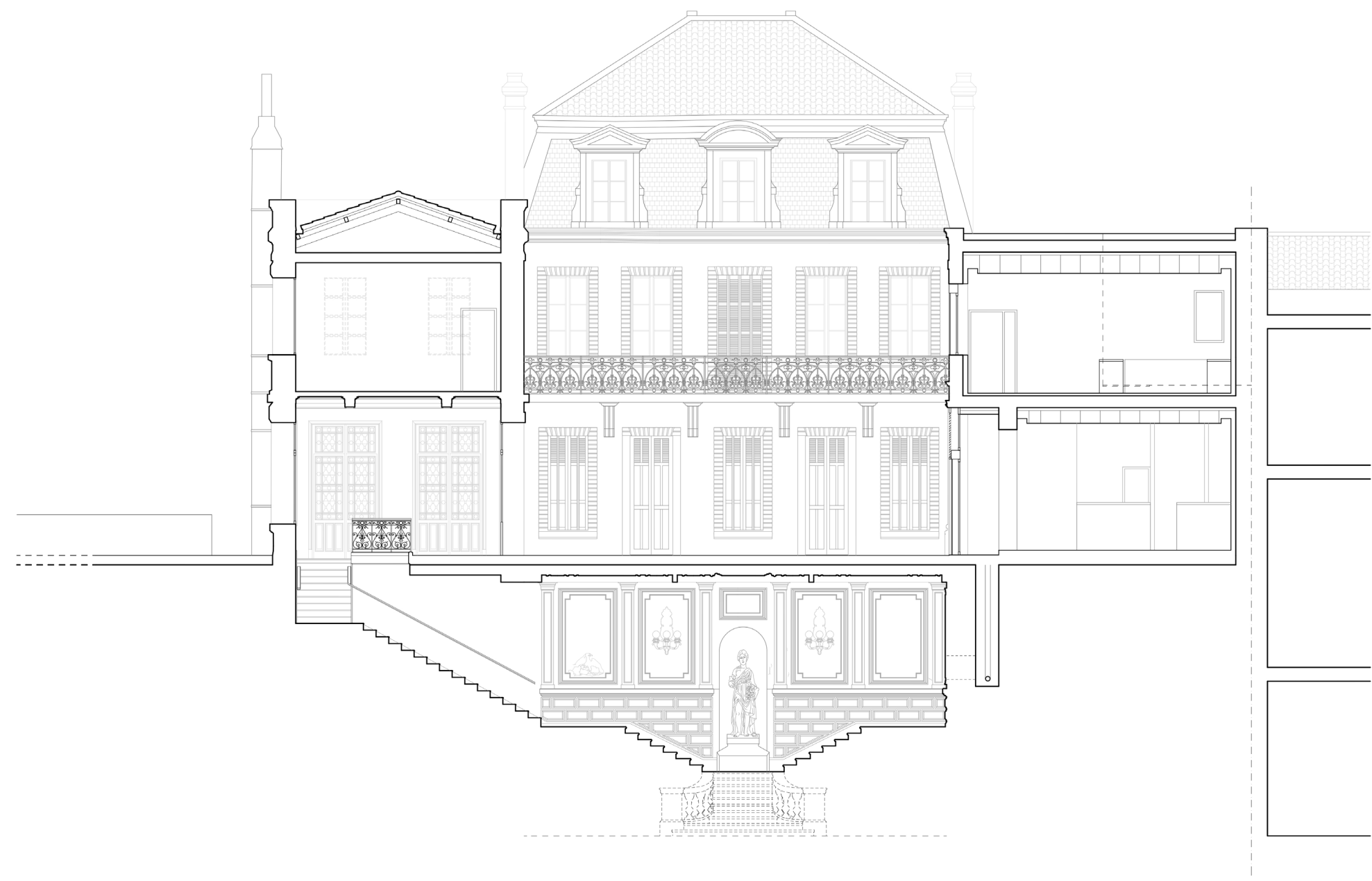
Promenade de la Corniche

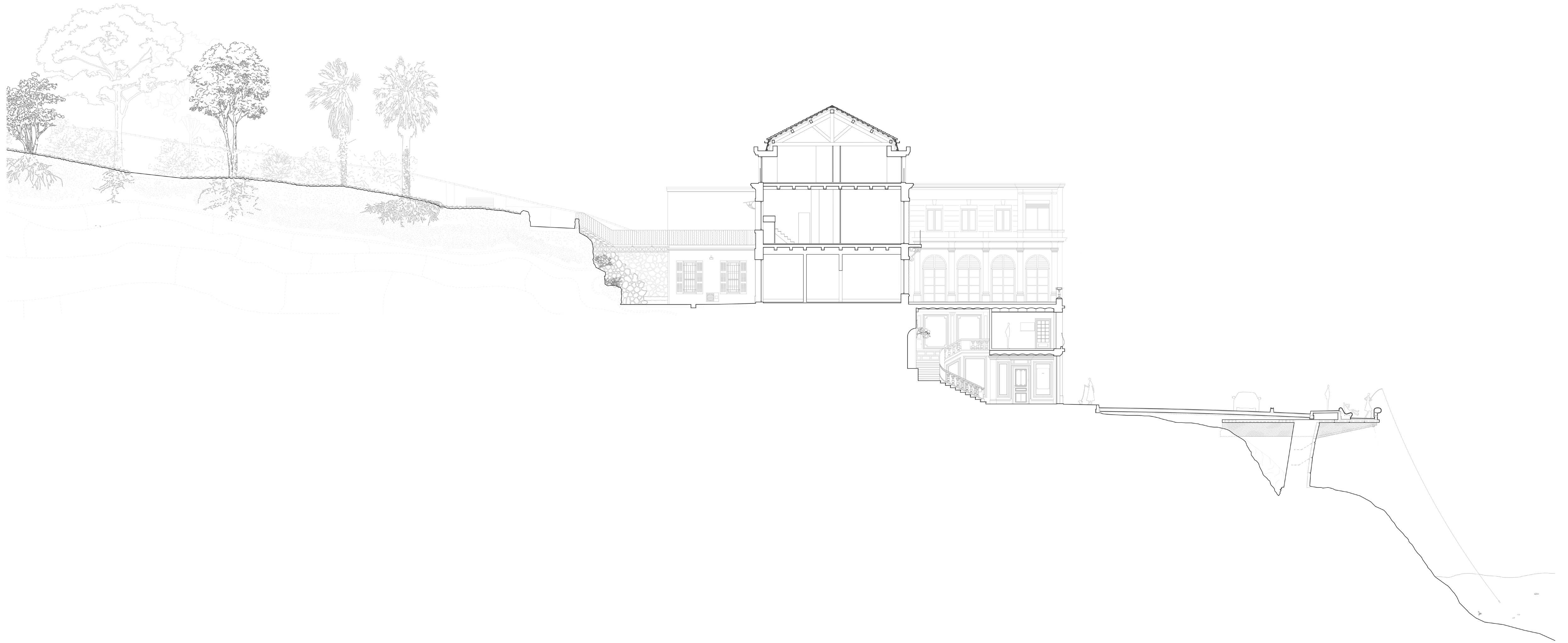


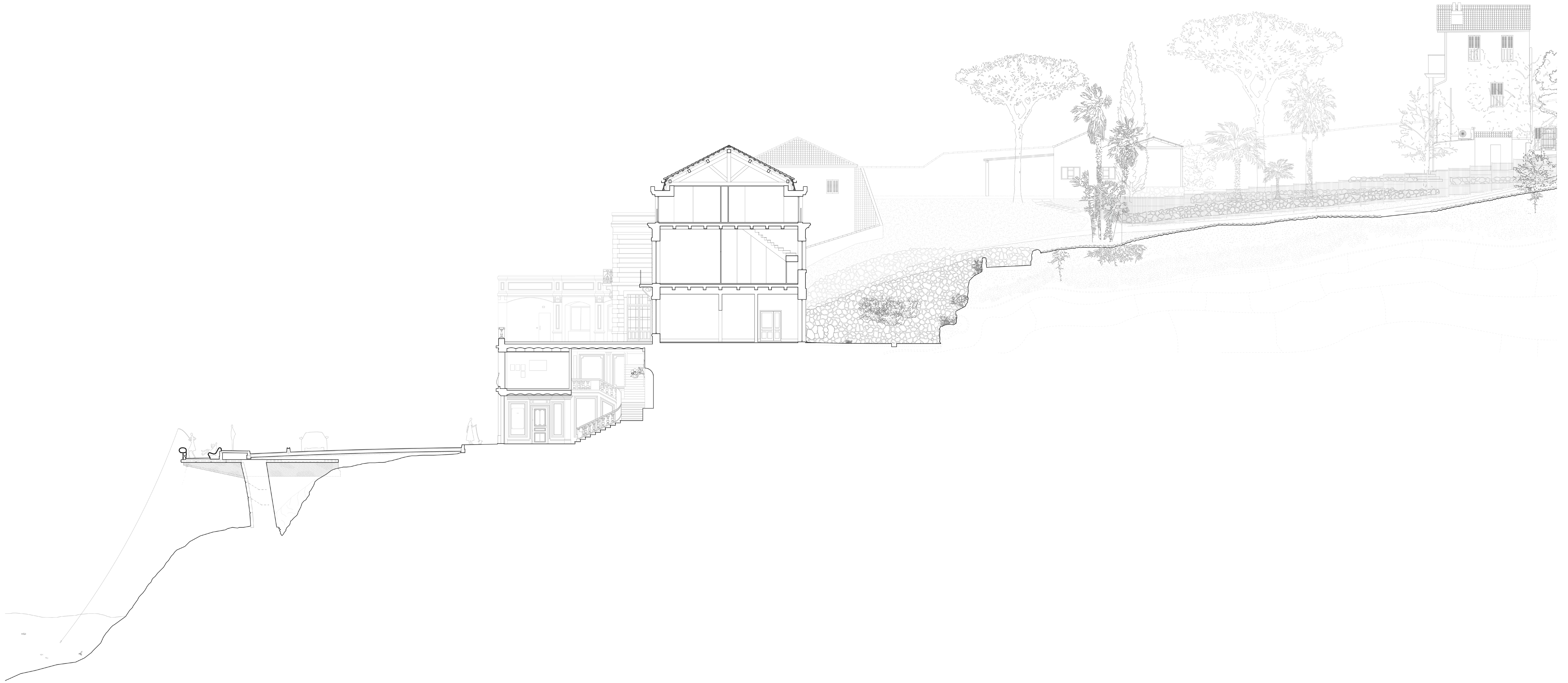


***\_Analyse & relevé***

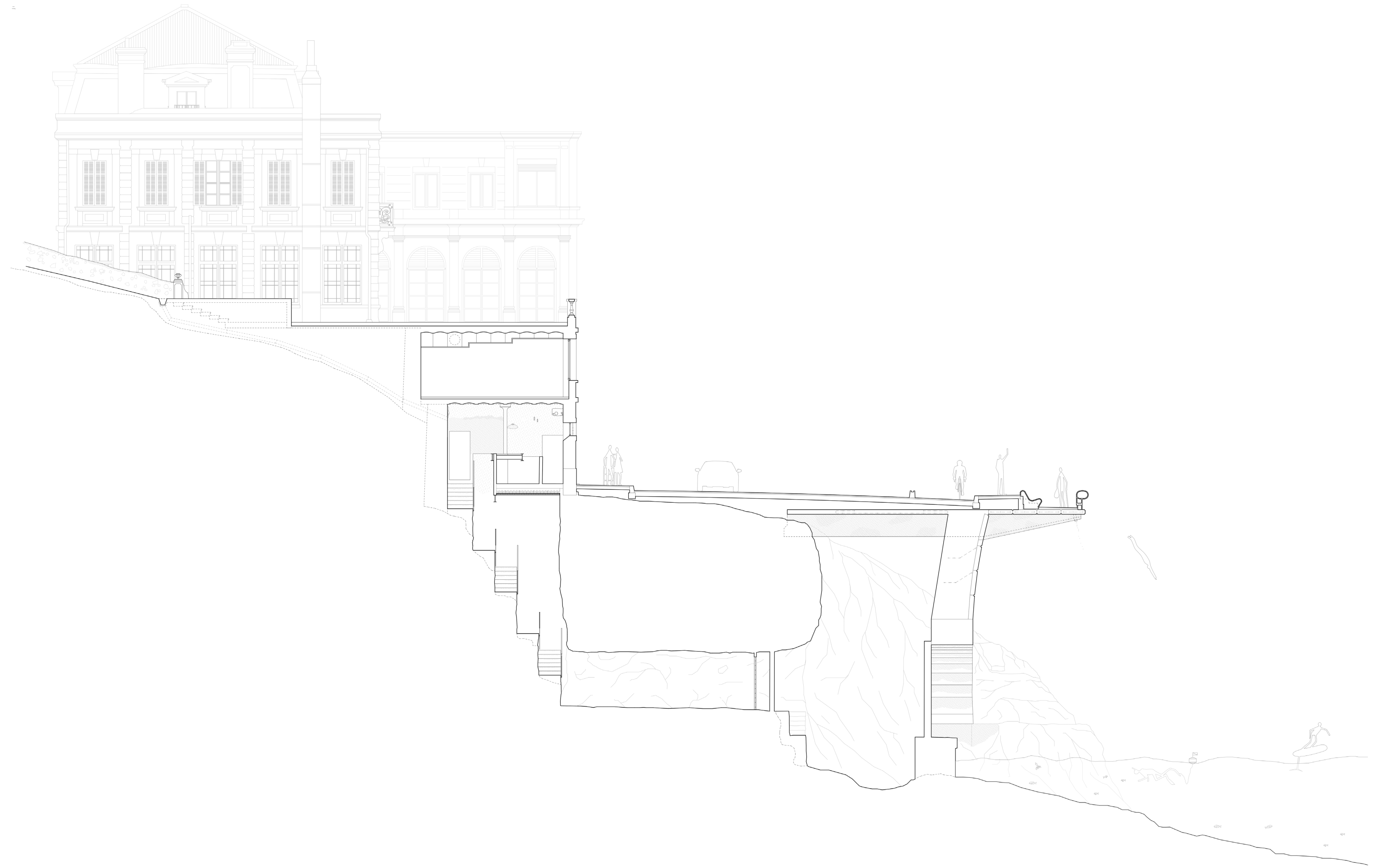


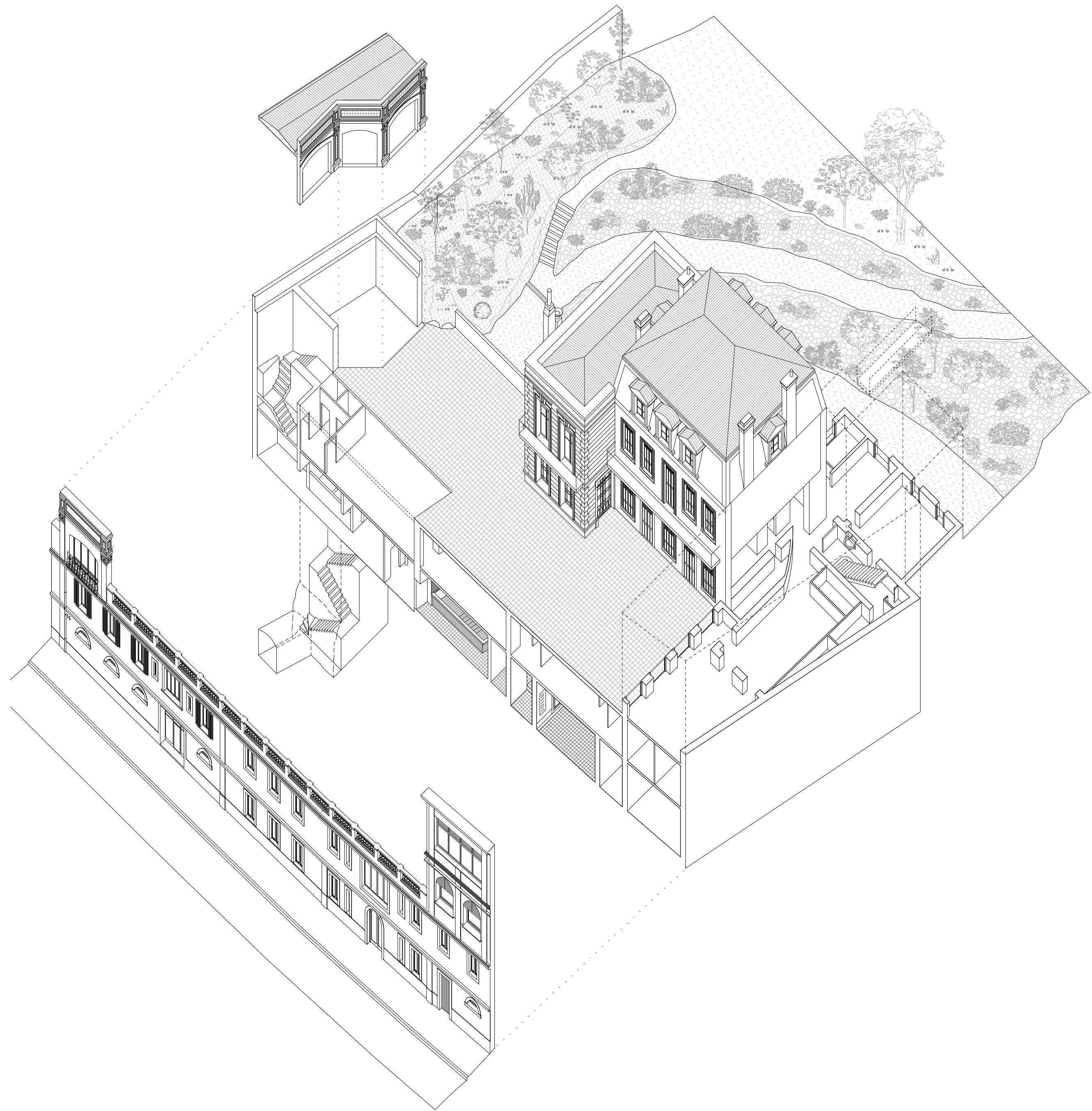


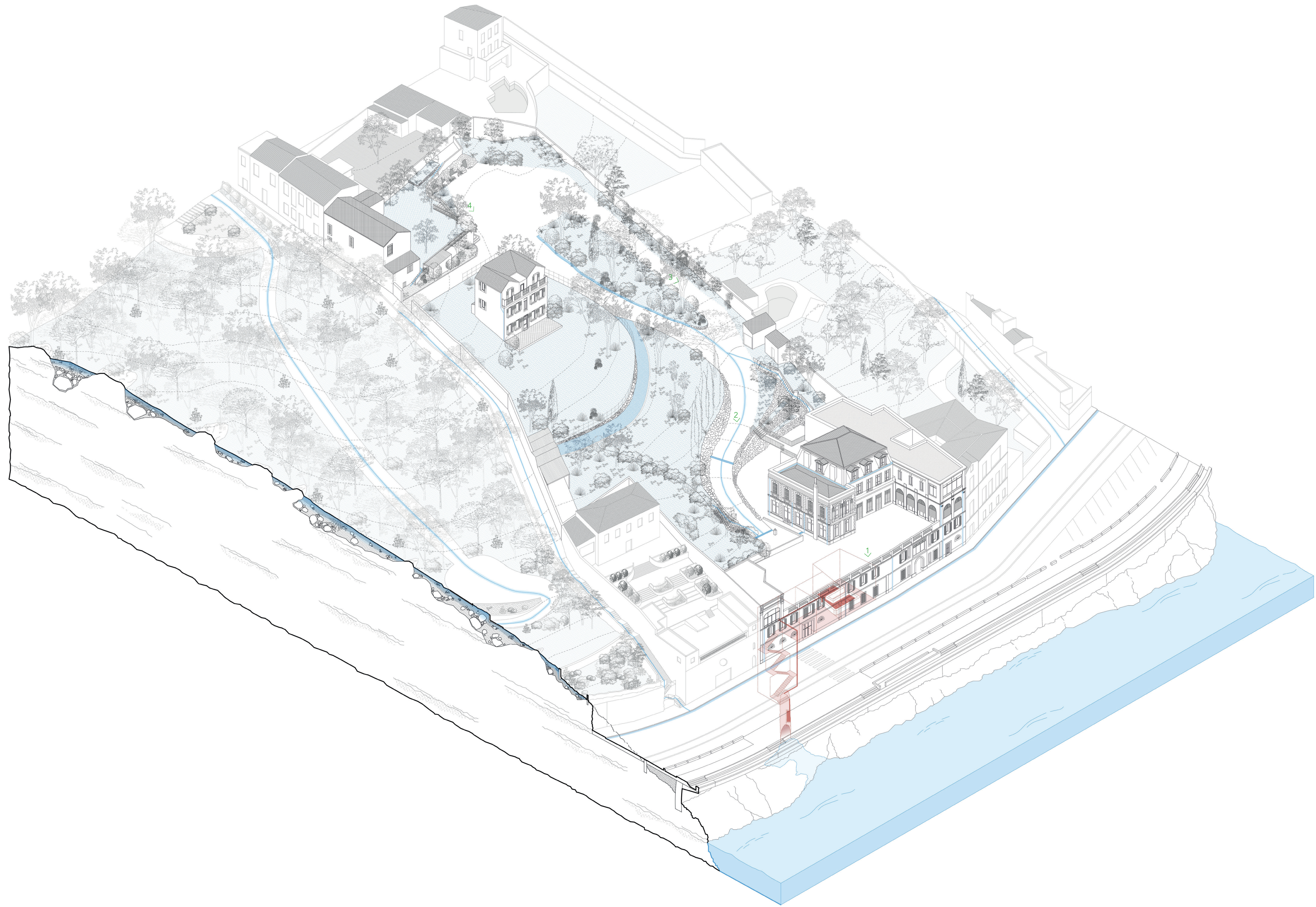




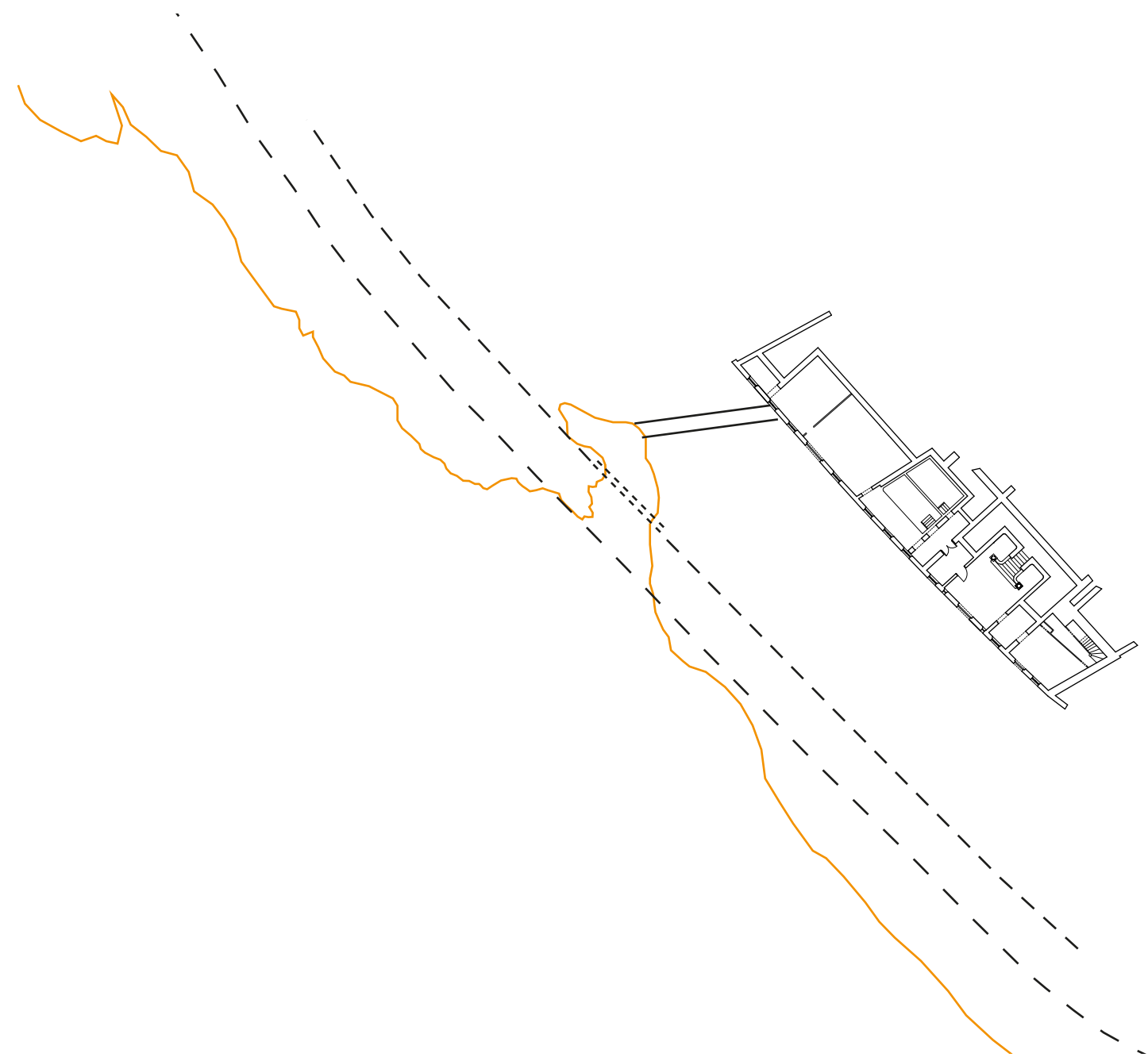








1930



2026

